



### One Piece Shower Module Cast Acrylic

## FEATURES

- **A 6038.02G R/L**

*The unit is molded with an integral seat and a shampoo/soap shelf. All units have an anti-skid floor treatment.*

*The unit shall be installed in a pit, 1 $\frac{3}{4}$ " (44) deep so that the finished floor will be level with the top of the threshold.*

*Units must be set in a mortar base leveled and any clearances between the pit opening and the unit be filled with mortar. Shimming is necessary. It is recommended that a floor drain at or near the entrance to the shower be included.*

*The factory supplied components are to include one stainless steel wrap around grab bar, two stainless steel vertical grab bars, an integral seat, and a stainless steel curtain rod.*

*The unit is thermoformed from a continuous cast acrylic sheet into a one piece, seamless unit. The unit is reinforced with a composite matrix. The unit has a backside fire rating of "A" and a flame spread of 25.*

## NOTES

- *Anti-skid floor treatment meets performance requirements of ASTM F-462-78.*
- *The basic shower conforms to ANSI Z124.2.*
- *Nominal Dimensions: Inside: 54" x 36" (1372 x 914)  
Outside: 60 $\frac{3}{4}$ " x 37 $\frac{1}{2}$ " (1543 x 953)  
Pit Roughing-In: 61 $\frac{1}{4}$ " x 38" (1556 x 965)*
- *Factory installed components are provided with additional back reinforcements to provide code complying structural integrity. In addition, these components are sealed from the backside.*

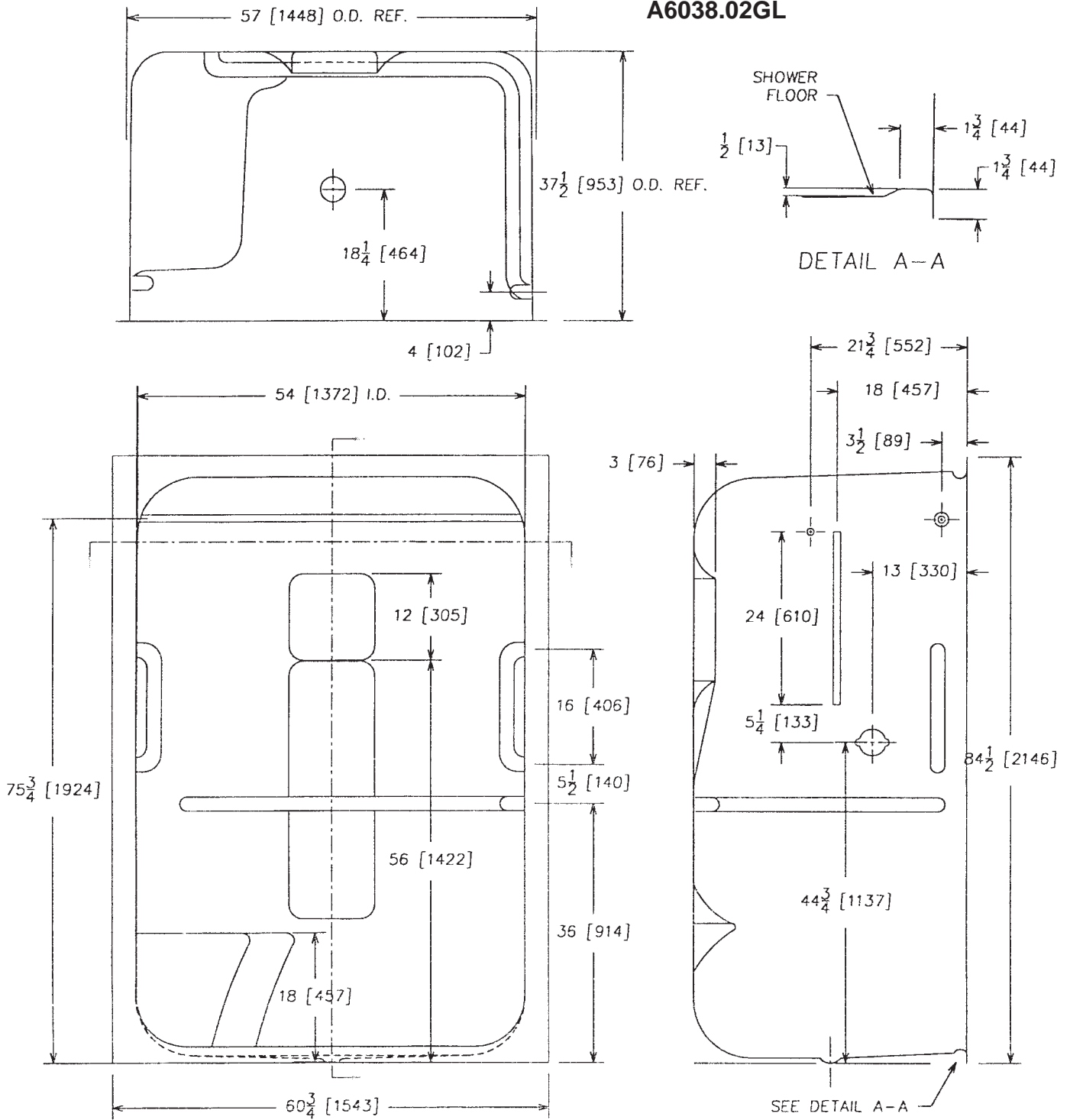
## OPTIONS

- *Dome Light. (1001/1021)*
- *2" (51) plastic drain with chrome plated strainer. (PD2)*
- *2" (51) cast brass drain with chrome plated strainer. (H30)*
- *White shower curtain with hooks. (C4)*
- *Lucite® acrylic sheet containing Microban® antimicrobial product protection. Available in white and bone only. (MBP)*

Lucite is a registered trademark of INEOS Acrylics, Inc. Microban is a registered trademark of Microban Products Company, Huntersville, NC.

## One Piece Acrylic Shower Module

### A6038.02GL



**IMPORTANT:** Roughing-in dimensions may vary 1/2" and are subject to change or cancellation without prior notice. No responsibility is assumed for use of superseded or voided leaflets.

Valve, slide guide, hand-held shower supplied by others.

Dimensions shown are for suggested locations only