

FIAT®



**ONE PIECE
SHOWER STALLS**

**INSTALLATION MANUAL
& WARRANTY INFORMATION**



Acrylic Bathware by

FIAT PRODUCTS LTD.

255 HUTCHINGS STREET, WINNIPEG, MANITOBA R2X 2R4 (204) 633-6122

ACRYLIC SHOWER STALLS PRE-INSTALLATION PLANNING

MODELS - MS 305, MS 306, MS 348, MS 3600, MS 3300

A protective plastic has been applied to the front of the shower stall. It is advised to leave this plastic on during installation to prevent the acrylic from scratching. A protective piece of cardboard, about the size of the floor of the shower stall, should be cut from the cardboard face cover and be placed within the bottom of the unit.

Check and verify all dimensions.

All plumbing and electrical shall be installed in accordance with inspection authorities requirements.

Tools and materials required (other than standard plumbing equipment):

- High speed drill
- Tape measure
- Level
- Hole saws (sized for brass set)
- Shims

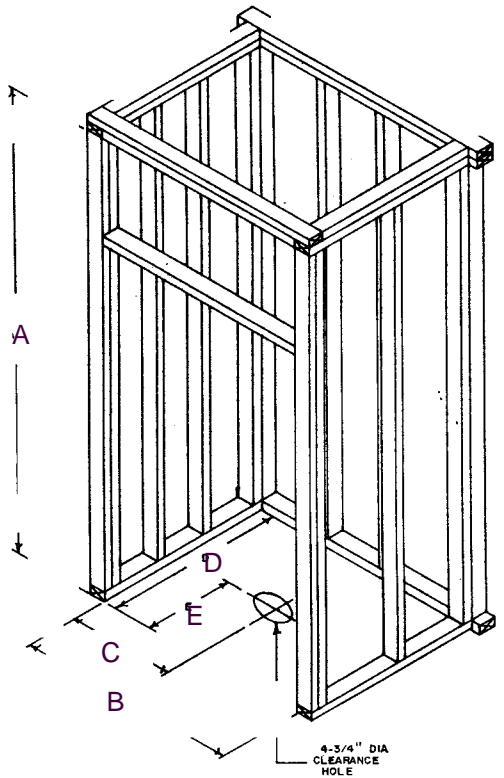
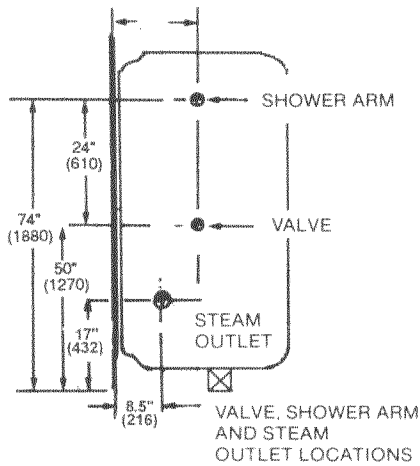
ROUGHING - IN DETAILS - ALL MODELS

1. Before framing is started, check level and quality of floor. Make sure sub-floor is sturdy and level.
2. Rough-in 2 x 4 studs at standard room height to dimensions shown. Check framed-in area for proper size and ensure studding is straight, square and plumb.
3. The studding across the top front of the unit can remain loose or be installed after installation of shower stall if ceiling height permits.
4. Provide a 4 3/4" (121) diameter hole in the floor to permit clearance for a 2" IPS and drain connection for all units. Locate to dimensions shown on diagram.
5. Install plumbing within framing, by using measurements from diagram. Measurements are taken from the front end of the new studs that were installed to accommodate the screw flange.
6. Check plumbing for any leaks.
7. **For Steam Units Only** - An access panel must be provided for the steam generator if it is to be placed beside the shower stall. Opening should be sufficient to install, repair or replace the generator. Panel should be minimum 16" x 14" (406 x 356). Plumbing for the steam head must be completed before unit is installed, unless access has been provided. Installation is subject to regulation of the local inspection authorities having jurisdiction.

All statements, technical information, and recommendations contained herein are based on tests we believe to be reliable; but the accuracy or completeness thereof is not guaranteed, and the following is made in lieu of all warranties, expressed or implied.

Neither seller nor manufacturer shall be liable for any injury, loss or damage, direct or consequential, arising out of the use of or the inability to use the product. Before using, the user shall determine the suitability of the product for the intended use, and user assumes all risk and liability whatsoever in connection therewith. No statement or recommendation contained herein shall have any force or effect, unless it is in an agreement signed by officers of seller or manufacturer.

13" - 3300
(330)
15" - 3600, 348, 305, 306
(381)



DIMENSIONS MAY VARY PLUS OR MINUS 1/4" AND ARE SUBJECT TO REVISION

	A	B	C	D	E
MODEL 3300	84 1/2" (2146)	36" (914)	18" (457)	30" (762)	14" (356)
MODEL 3600	84 1/2" (2146)	36" (914)	18" (457)	34" (864)	16" (406)
MODEL 348	86 1/2" (2197)	48" (1219)	24" (610)	34" (864)	16" (406)
MODEL 305	86 1/2" (2197)	60" (1524)	30" (762)	34" (864)	16 1/2" (419)
MODEL 306	86 1/2" (2197)	60" (1524)	30" (762)	34" (864)	16 1/2" (419)

INSTALLATION PROCEDURE

STEP 1

On the fiberglass side of the unit, mark the location for valves and showerhead (and/or steamhead), making sure the measurement is taken from the backside of the screw flange. Drill 1/4" pilot holes at locations marked from the outside of the unit. (DIAGRAM A)

STEP 2

From the inside of the unit, using proper sized hole saws, cut openings for valves and shower head using pilot hole as a guide. (DIAGRAM B)* A 1" hole saw should be used for the steam outlet.

STEP 3

Fasten drain to the shower stall.

STEP 4

Install unit into stud opening by placing bottom flange directly against the front studding and tip unit into place. "Make sure drain connection lines up." (DIAGRAM C)

STEP 5

Once unit is in place, level unit vertically and horizontally and shim accordingly. All shims should be placed under the support board. Nail or glue shims in place if possible. (DIAGRAM D)

STEP 6

Once unit is level, fasten both side flanges to the studs using drywall screws or Flathead wood screws, using the pre-drilled flange holes. Make final connections for plumbing and caulk around drain.

NOTE:

Before attaching shower stall to studding, check door opening for proper size. The door opening is very critical and must be maintained to insure for proper door installation.

To correct door opening, cut a board to the correct dimension for the unit being installed, and wedge it in place in the middle of the front flange opening. See diagram.

DO NOT FORCE INTO PLACE

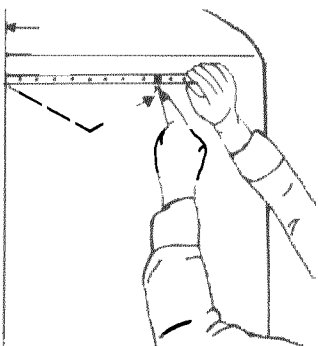


DIAGRAM A

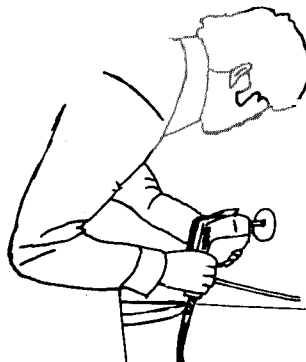


DIAGRAM B



DIAGRAM C

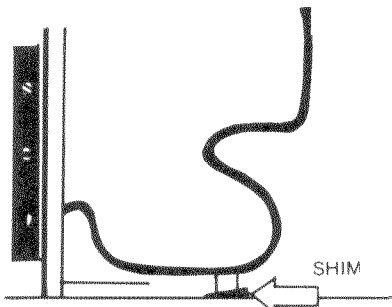
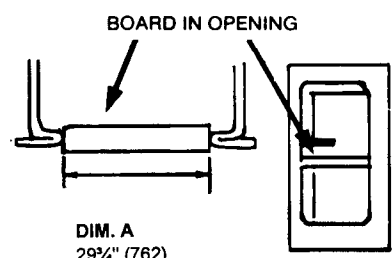


DIAGRAM D



MODEL	DIM. A
MS 3300	29 3/4" (762)
MS 3600	29 3/4" (762)
MS 348	42 1/2" (1080)
MS 305	53 3/4" (1365)
MS 306	53 3/4" (1365)

STEP 7

Fasten 2 x 4 brace into place. Finish the front of the unit with drywall, using recommended construction as shown. (DIAGRAM E)

Acrylic shower stalls are C.S.A. certified, under C.S.A certification number LM 34551.

CLEANING AND CARE OF ACRYLIC BATHWARE.

Acrylic bathware are molded of colorfast acrylic to provide a thick, smooth, super strong surface. It is reinforced with fibreglass for years of durable service.

The protective plastic film applied to the unit will leave a film on the acrylic. To remove this film, use a soft cloth dampened with rubbing alcohol, mineral spirits or turpentine and wipe the area clean.

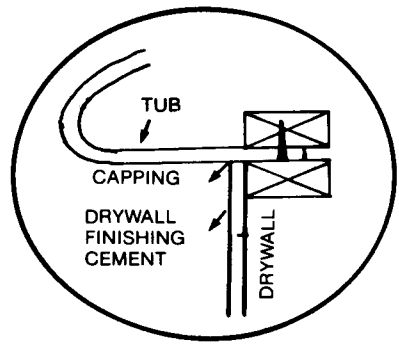
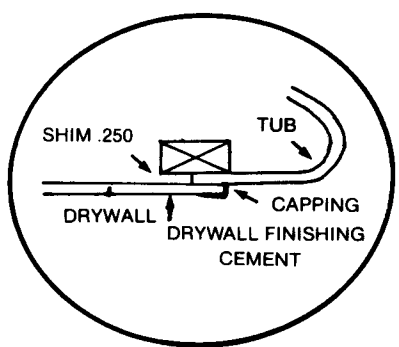
NEVER USE ABRASIVE CLEANERS UNDER ANY CIRCUMSTANCES.

For day to day cleaning, use only liquid or foam cleaners with a soft cloth.

Dull areas may be restored or light scratches removed, by rubbing with an automotive rubbing compound, followed by a light application of liquid or automotive car wax. If the unit has been damaged in anyway, contact your local distributor for local repair service.

WARNING:

Soap and water should only be used for the cleaning of the decorative screened glass. **AVOID** any cleaning agents labelled with a corrosive warning sign.



National Customer Assistance Group

255 Hutchings Street, Winnipeg, Manitoba R2X 2R4

Phone: 204-633-6122 Fax: 204-632-4854

Distribution Coast to Coast