

FIAT



PRODUCTS LTD

Renovator

TUB SHOWER

Installation Manual



Acrylic Bathware by

Fiat Products Ltd

255 Hutchings Street, Winnipeg, MB, R2X 2R4 Ph# 204-633-6122

ACRYLIC BATHWARE PRE-INSTALLATION PLANNING

MODEL 2010-3 - 16" (406 MM) WASTE AND OVERFLOW REQUIRED

MODEL MTS 360-3 - STANDARD WASTE AND OVERFLOW

The sectional tub/shower enclosures are designed for installation into an existing bathroom.

PLEASE TAKE THE TIME TO STUDY ALL SPECIFICATIONS AND INSTALLATION INSTRUCTIONS BEFORE STARTING. The assembly of the tub/shower enclosure is considered to be a two man job.

A protective plastic has been applied to the front face of the unit. It is advised to leave this plastic on during installation to prevent the acrylic from being scratched. A protective piece of cardboard, about the same size as the floor of the unit, should be cut from the cardboard face cover and be placed with the bottom of the unit to avoid damaging it during disassembly and installation.

Check to make sure you have proper clearance before proceeding. If the vanity or toilet is in the way, they will have to be relocated. In small bathrooms, it is best to remove the vanity and toilet completely, to allow you more working room.

If the enclosure is being installed on a floor where there is no access from below, a portion of the floor will have to be opened up to be able to make proper drain connections.

When the enclosure is being installed against an outside wall, make sure proper insulation and vapour barriers are in place.

There should be no need for structural changes to the framing of the house; if there is, please check with local authority before proceeding.

Check and verify all dimensions.

All plumbing and electrical shall be installed in accordance with inspection authorities' requirements.

CAUTION: DO NOT LIFT WHIRLPOOL BY PIPING. CARE MUST BE TAKEN TO AVOID DAMAGING WHIRLPOOL TUB BY FORCING IT THROUGH TO NARROW A STUD OPENING. CARE MUST BE TAKEN NOT SUPPORT WEIGHT OF TUB WITH DRAIN PIPE.

Tools and materials required (other than standard plumbing equipment).

- High speed drill
- Tape measure
- Level
- Square
- Hole saws (proper sizes for brass set)
- Caulking
- Caulking gun
- Robertson screw driver
- No. 8 x 1 1/2" Panhead Robertson screws
- Shims

• All statements, technical information, and recommendations contained herein are based on tests we believe to be reliable; but the accuracy or completeness thereof is not guaranteed, and the following is made in lieu of all warranties, expressed or implied.

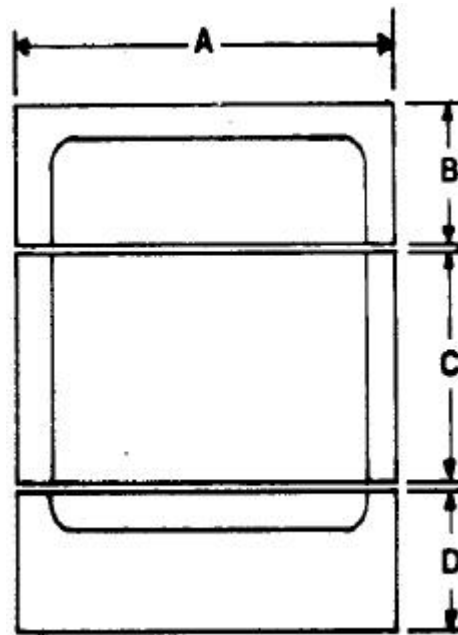
• Neither seller nor manufacturer shall be liable for any injury, loss or damage, direct or consequential, arising out of the use of or the inability to use the product. Before using, the user shall determine the suitability of the product for the intended use and user assumes all risk and liability whatsoever in connection therewith. No statement or recommendation contained herein shall have any force or affect, unless it is in an agreement signed by officers of seller or manufacturer.

• All whirlpool systems have been tested in-house before leaving the factory. Every system is tested under actual usage, ensuring proper functioning of mechanical and electrical systems, resulting in many years of safe, trouble-free usage.

The sectional acrylic tub/shower enclosure should remain together until the unit is ready for installation. If for some reason the sections have to be taken apart beforehand, store each section in a safe place and **KEEP** them in their natural shape. **DO NOT LAY CENTRE SECTION ON ITS BACK.** It is not recommended to leave the unit disassembled for a period longer than two days.

The tub section of the 2010-3 measures 26" (660 mm) high. If the bathroom doorway is smaller, the door framing will have to come out and the levelling board on the bottom of the tub can be cut to allow it to pass through the door. If the levelling board is cut, be sure to nail it back into position before installing.

The sectional tub/shower units have assembling blocks permanently mounted onto the unit. **THESE BLOCKS SHOULD NOT BE REMOVED.** Fibreglass pins are mounted within the block, to make location of sections easier. **"MAKE SURE ALL PINS ARE IN PLACE BEFORE ASSEMBLING SECTIONS TOGETHER."**



Dimensions may vary plus or minus 1/4" (6 mm) and are subject to revision.

	A	B	C	D
2010-3	62" (1575)	18" (457)	45 1/2" (1156)	26" (660)
360-3	62" (1575)	18" (457)	45 1/2" (1156)	24" (610)

ROUGHING-IN DETAILS

The framing for your sectional tub/shower is the most important part and should not be overlooked. If the framing is not square, level or sturdy, problems could develop over time with the enclosure, which could add needless expenses.

1. All plasterboard and tile have to be removed within the area where the enclosure will be installed. The plasterboard on the sidewalls must be removed at least 16" (400mm) past from where the front of the tub will sit.
2. Once studding has been exposed, check insulation and vapour barrier on outside walls. Check to make sure studding is level, square and sturdy.
3. Check to make sure sub-floor is level and that the floor is strong enough to support the weight of the tub. In some cases a new sub-floor might have to be placed on top of the old one and levelled completely.
4. Rough-in front 2 x 4 studs at standard room height to dimensions shown. Recheck framed-in area for proper dimensions and ensure studding is straight, square and plumb. *(The walls of the tub/shower unit must not come in contact with the studs)*. There should be at least 1" (25 mm) clearance between the walls of the unit and the studding.
5. The studding across the top front of the unit can remain loose or be installed after the installation of the tub/shower if ceiling height permits.

NOTE: Whirlpool/Steam Models Only. The front studding may have to remain out for the installation of the tub section only. Once tub section is in place, front studs can then be fastened into place. Also, studding will have to be notched to allow clearance for the whirlpool jets (see drawing).

On whirlpool models, access **MUST** be provided for whirlpool pump. Opening should be sufficient to repair or replace (see drawing for access panel dimensions).

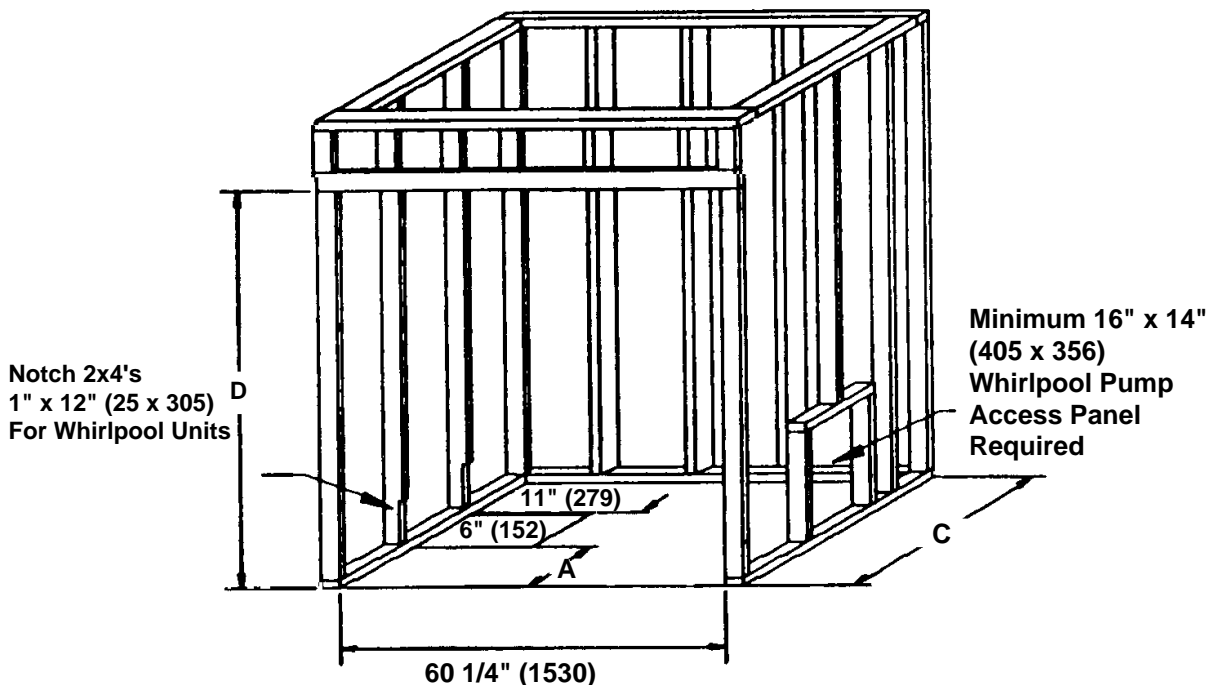
6. Install plumbing tree within framing, by using measurements from diagram. Measurements are taken from the front of studs and from the backside of the tub/shower screw flange. (It may be necessary to move existing drain and supply lines for installation).

NOTE: On the 2010-3 models, we recommend the use of a single lever control valve. The installation of twin 8" (203mm) spread fittings requires the holes to be drilled offset. This would mean that the shower head and 8" (203mm) fitting fill not be in line with the waste and overflow.

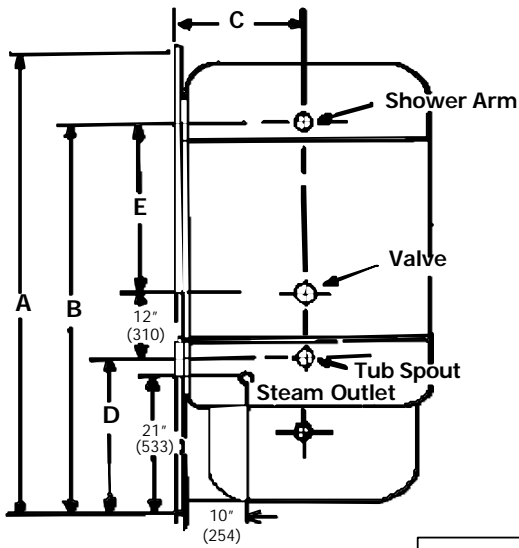
7. Check plumbing for leaks.
8. **FOR STEAM UNITS ONLY** Plumbing for the steam head must be complete before the unit is installed, unless an access panel has been provided. Installation is subject to regulations of the local inspection authorities.

	A	"B"	C	D
2010-3	13" (330)	34½" (876)	35½" (902)	88½" (2248)
360-3	18" (457)	35½" (902)	36½" (927)	86½" (2197)

"B" – measurements from face to back of unit



SUGGESTED PLUMBING LOCATIONS

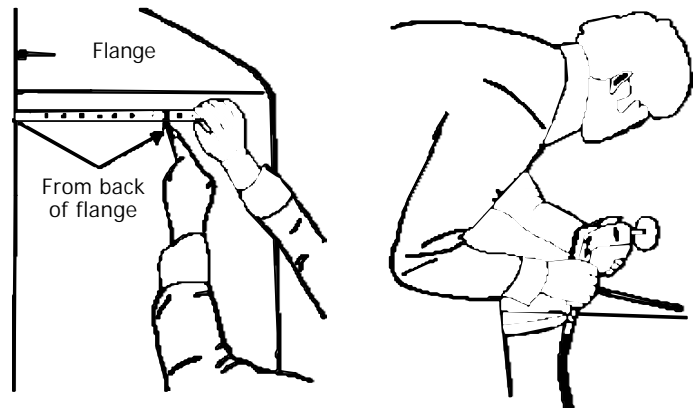


	A	B	C	D	E
2010-3	89½" (2273)	76½" (1943)	13" (330)	25" (635)	39½" (1003)
360-3	87½" (2223)	76" (1930)	18" (457)	22" (559)	42" (1067)

Dimensions may vary plus or minus ¼" (6) and are subject to revision.

PREPARING TUB/SHOWER UNIT FOR INSTALLATION

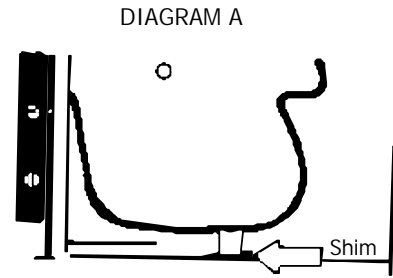
1. With the tub sections all together and unit standing upright, position unit on level ground and mark hole locations (on the fibreglass side of the unit) for shower head, filler spout and valve controls. Make sure the measurements are taken from the backside of the screw flange (see diagram). Drill ¼" pilot holes at marked locations from the outside of the unit.
2. From the inside of the unit, using proper sized hole saws, cut openings using pilot hole as a guide. *A 1" hole saw should be used for the steam outlet.
3. Install drain and overflow on the unit before installation of tub section (if no access panel is provided for the plumbing).
*A 16" waste/overflow set is required on 2010-3 series models.
4. With unit standing upright, cut, remove and discard the steel straps placed around the unit.
5. Unfasten clamps holding sections together.
6. Carefully remove top section of the unit by lifting straight up and place the section in a safe place. Remove centre section by lifting straight up and store safely.
7. Remove all fibreglass pins from the locating blocks. These pins will be put back into the blocks as the units are assembled.



INSTALLING THE SECTIONS

Install tub section into stud opening by placing the bottom side flanges directly against the front studding and tip section into place. If front studding has been left out to allow for the whirlpool, carefully slide the section into place. **"MAKE SURE DRAIN CONNECTIONS LINE UP."**

Once tub section is in place, level unit vertically and horizontally. If it is not level, remove section and add additional shims. All shims should be placed under the sump support board and be nailed or glued in place if possible. **DIAGRAM A**



1. Remove section and take it to the area where the assembly will take place.
2. Mount pins in the locating blocks.
3. Carry centre section to location and line pins up with the top portion of the block. (Section will then fall into place).

DIAGRAM B

4. Carry top section to the location and line pins up with top portion of block.
5. Clear silicone **MUST** be applied along the edges of the cut lines within the tub.
6. Starting with the bottom cut line, push extrusion into place and proceed around the inside of the unit. **DIAGRAM C**
7. Mount top extrusion the same way,
8. Wipe off excess silicone along the extrusion edge.
9. Cut any excess extrusion flush with the side of the unit.
10. Fasten all clamps on back of unit. **DIAGRAM D**
11. Silicone **MUST** also be applied along the exterior of the cut lines, once the extrusion is in place.
12. Slide complete unit into frame-in opening and check level.

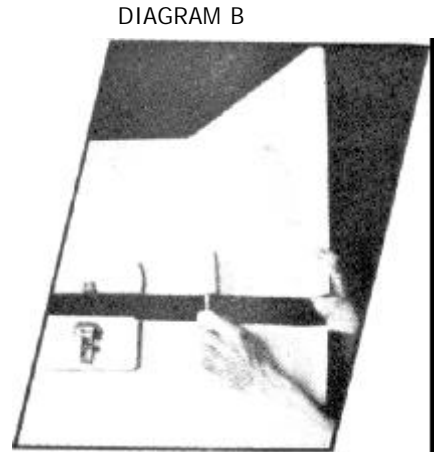


DIAGRAM C

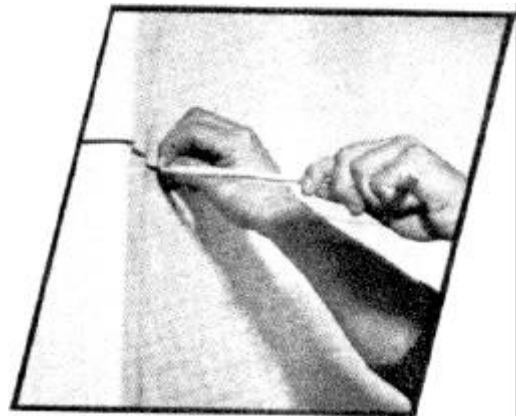
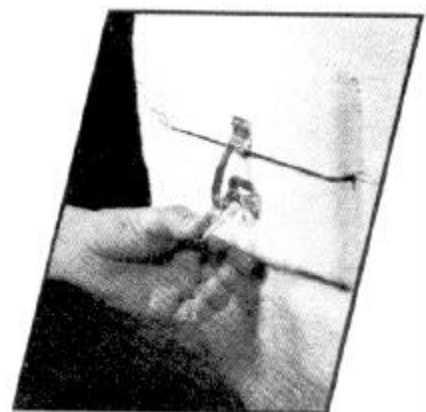


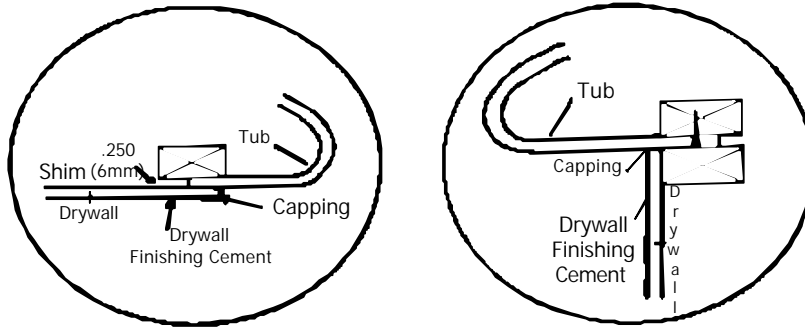
DIAGRAM D



With the sections assembled together, check the front face to make sure the four corners are square and in line. Screw the sections in place using #8 - 1 1/2" Robertson screws. If the screw flange does not fit squarely along the studs, shim the flange where there are gaps. **DO NOT** insert screws on an angle.

Fasten top 2 x 4 brace into place if it was omitted. Finish the front of the unit with drywall, using recommended construction as shown. **(DIAGRAM E)**

DIAGRAM E



NOTE: The whirlpool includes a pump requiring a 110V hook-up. The pump motor should be hooked up after the installation of the whirlpool unit. A licensed electrician should perform all wiring.

Whirlpool piping is Factory assembled. **THE WHIRLPOOL PUMP MUST NOT BE RELOCATED. DO NOT MODIFY THE WHIRLPOOL SYSTEM, AS THIS WILL ADVERSELY AFFECT THE PERFORMANCE AND SAFE OPERATION OF THE WHIRLPOOL. FIAT SHALL NOT BE LIABLE UNDER ITS WARRANTY OR OTHERWISE FOR PERSONAL INJURY OR DAMAGE CAUSED BY ANY SUCH UNAUTHORIZED MODIFICATION.** Do not support baths by pump or piping when positioning tub. All plumbing and electrical shall be installed in accordance with inspection authorities' requirements.

ALL INSTALLATIONS SHALL HAVE GROUND FAULT CIRCUIT PROTECTION (SUPPLIED BY OTHERS) WHICH WILL PROVIDE ADDITIONAL PROTECTION AGAINST LINE-TO-GROUND SHOCK HAZARD. A 120V, 20 amp., 60Hz. SEPARATE CIRCUIT IS REQUIRED.

NOTE: WATER TESTING FOR ALL PIPING JOINTS AND CONNECTIONS SHOULD BE PERFORMED PRIOR TO COMPLETING INSTALLATION. BEFORE WATER TESTING ANY WHIRLPOOL MODELS, CLEAN UNIT THOROUGHLY OF ALL DIRT AND DEBRIS. **FILL UNIT WITH WATER TO A LEVEL 1½" (38mm) BELOW OVERFLOW.**

CAUTION:
NEVER START A PUMP UNLESS TUB IS FILLED WITH WATER TO A LEVEL DESCRIBED IN NOTE ABOVE.

All tub/shower enclosures are C.S.A. certified under C.S.A. certification number LM 34551.

Cleaning and care of Acrylic bathware

Acrylic bathware is molded of colorfast acrylic to provide a thick, smooth, super strong surface. It is reinforced with fibreglass for years of durable service.

The protective plastic film applied to the unit will leave a film upon the acrylic. To remove this film, use a soft cloth dampened with rubbing alcohol, mineral spirits or turpentine and wipe the area clean.

NEVER USE ABRASIVE CLEANERS UNDER ANY CIRCUMSTANCES!

For day to day cleaning, use only liquid or foam cleaners with a soft cloth.

Dull area may be restored or light scratches removed, by rubbing with an automotive rubbing compound, followed by a light application of liquid or automotive car wax. If the unit has been damaged in any way, contact your local distributor for local repair service.

NOTE: Whirlpool System must be flushed every 90 days as follows: Fill the bath with hot water only. Add to hot water 2 teaspoons low foaming dishwashing detergent such as Cascade or Calgonite. Run the whirlpool for 10 to 15 minutes. Drain the bath completely. Fill the bath with cold water only. Run the whirlpool for 5 to 10 minutes. Drain the bath completely.

WARNING:

Soap and water should only be used for the cleaning of the decorative screened glass. **AVOID** any cleaning agents labelled with a corrosive warning sign.

FIAT
PRODUCTS LTD.

National Customer Assistance Group
255 Hutchings Street, Winnipeg, Manitoba R2X 2R4
Phone: 204-633-6122 Fax: 204-632-4854