



Acrylic Shower Suite One Piece Acrylic

FEATURES

MS-4836H

- Textured floor
- Two integrally molded seats
- Integrally molded shelves and soap dish
- Clear acrylic horizontal grab bar
- 2 - 16" (406 mm) 1/4" (32 mm) vertical stainless steel grab bars
- 1 - 16" (406 mm) 1/4" (32 mm) horizontal stainless steel grab bar
- 1" (25 mm) stainless steel shower curtain rod
- 1" (25 mm) screw flange for easy fastening to studs
- Bottom of flange notched to accommodate sill plate

DIMENSIONS:

50" x 36" x 87" (1270 mm x 914 mm x 2210 mm)

MS-4836-3H

3-piece:

50" x 36" x 85 1/2" (1270 mm x 914 mm x 2172 mm)

NOTES

The modular showers shall be manufactured by FIAT Products. The units shall be thermoformed from continuous cast, cross linked acrylic sheet into a one-piece seamless unit with smooth rounded corners and reinforced in the back with fiberglass and polyester resin which has been further treated with a flame retardant additive. All FIAT acrylic units meet or exceed flame and smoke standards as outlined in the National Building Code of Canada. All grab bars meet or exceed ASTM standards. Modular showers shall be pre-drilled for drain fitting connection (supplied by others). Vertical flanges shall be pre-drilled to facilitate attaching to studs.

WARRANTY:

FIAT Products warrants to the purchaser of FIAT Bathware Products that each unit is free from defects in material and workmanship, under normal use for a period of one year from date of purchase.

Fully detailed warranty card and installation manual are supplied with each unit.

OPTIONS

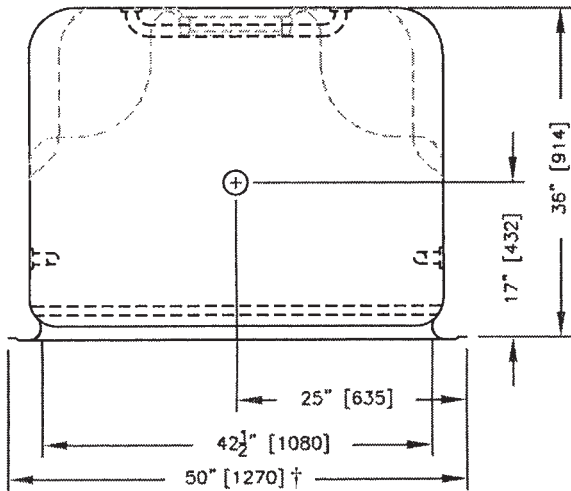
- 3-piece sectional construction (-3)
- Model 1002/1021 CSA approved, waterproof canopy light for field installation
- Standard color for all models is white. Other colors are available on request.

CUSTOM COMFORT

MS-4836H

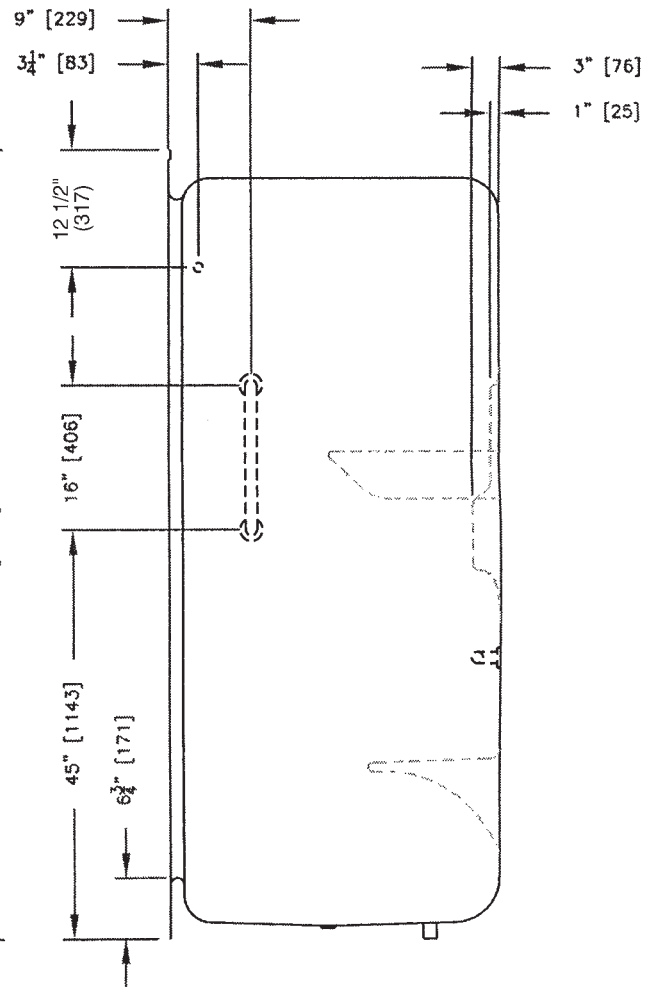
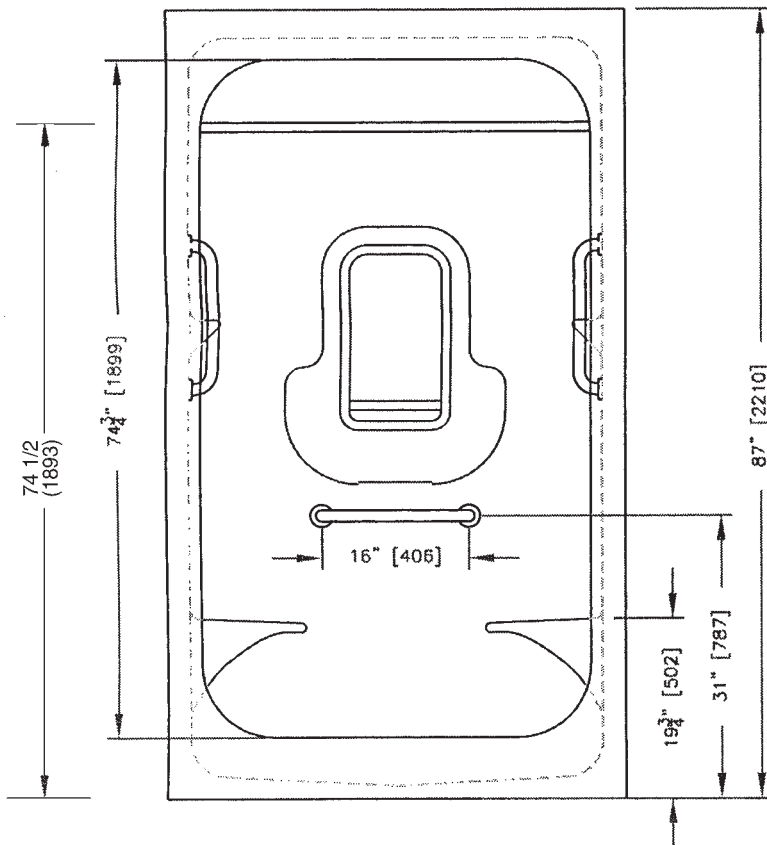


One Piece Acrylic Shower Suite



DIMENSIONS MAY VARY
+/-1/4" (6 mm) AND ARE
SUBJECT TO REVISION

† This dimension includes 1" (25mm) screw flange each side.
Recess required is 2" less than overall dimension indicated.



IMPORTANT:

Dimensions may vary plus or minus 1/4" (6 mm) and are subject to revision. Specifications are subject to change without notice. Unless otherwise specified, CSA approval has been obtained wherever required. All products must be installed in accordance with installation instructions provided. Failure to do so may invalidate warranty at manufacturer's discretion.



255 Hutchings St. • Winnipeg, MB • R2X 2R4 • Ph. 800-665-7531 • 204-633-6122 • Fx. 204-632-4854
e-mail: info@fiat.ca • website: www.fiat.ca

